

NEVADA'S ECONOMY

A monthly report produced for Commerce Real Estate Solutions by Stephen P. A. Brown, PhD, Center for Business & Economic Research, University of Nevada, Las Vegas



COMMERCE
REAL ESTATE SOLUTIONS • COMRE.COM
INDEPENDENTLY OWNED AND OPERATED

To receive an electronic version of this report, please subscribe at:
www.comre.com/subscribe

ISSUE 033 SEPTEMBER 2013



AN IN-DEPTH LOOK AT NEVADA'S CURRENT **ECONOMIC INDICATORS**

One consequence of the government shutdown has been the delayed release of data. Most notably absent are state and local employment numbers. At the state and local level, jobs gained (or lost) are the most common series used to represent the current state of the economy. Now that we lack that information, what other indicators can we turn to?

Consumer Spending

One frequently used economic indicator is consumer spending. Increased spending suggests more disposable income from higher employment. Using 12-month moving averages, taxable sales increased by 0.30 percent for Nevada and 0.29 percent for Clark County in August 2013, *Figure 1*. When comparing the first eight months of 2013 to the first eight months of 2012, taxable sales were up 5.28 percent and 3.93 percent for Nevada and Clark County, respectively.

Another valuable measure of consumer spending is automobile and part sales. Increased spending on automobiles indicates consumers' willingness to purchase big ticket items. Since the recession, Nevada's numbers have not kept up with the national pace in terms of total recovery, *Figure 2*. For the first seven months of 2013, however, automobile and part sales in Nevada have strengthened, up 12.36 percent. This outperforms the national pace, which has increased by 8.82 percent thus far.

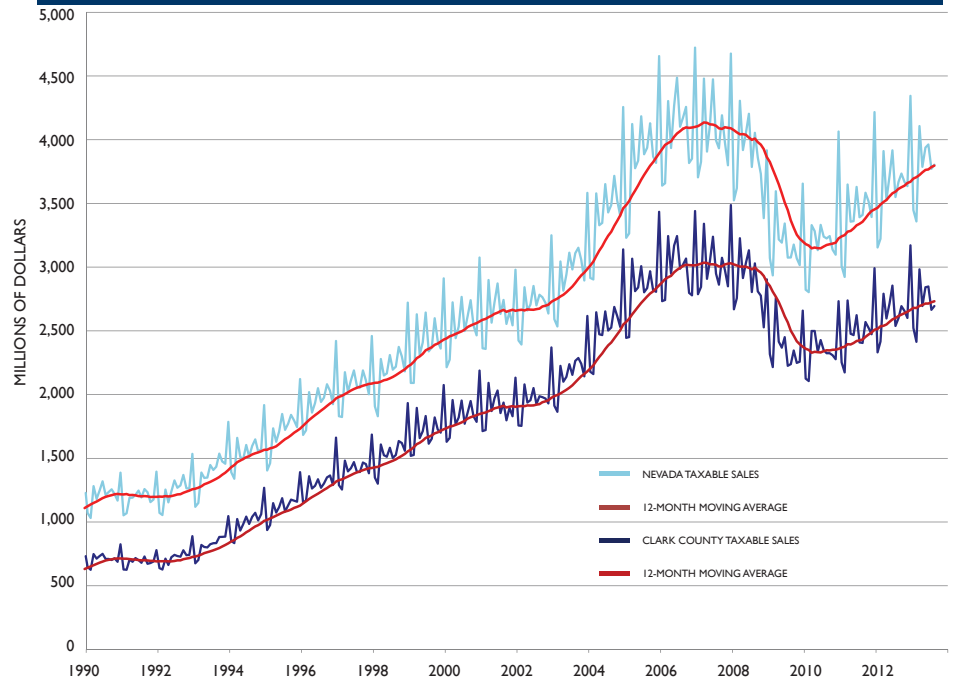
The condition of Nevada's economy can also be assessed by measuring activity in the state's most important industries. Economists typically use location quotients to determine which industries drive a region's economy. A location quotient provides information about whether the region has more or less of a particular industry than is the national average.¹ For Nevada, we only need to concentrate on two industries, gaming/tourism and real estate/construction.

Gaming and Tourism

Measuring activity in the tourism sector can be done a few ways. First is to look at total visitors. For August 2013, the 12-month moving average of Clark County visitor volume increased by 0.08 percent, *Figure 3*. Overall, Clark County visitor volume for 2013 has been weak. Compared to the first eight months of 2012, total visitor volume is down 0.52 percent. Similarly, 2013 Nevada visitor volume is down 0.39 percent when compared to the 2012 numbers.

Another good indicator for the tourism sector is gross gaming revenues, *Figure 4*. Nevada gaming revenues increased by 0.89 percent from July to August, using 12-month moving averages. Clark County and Las Vegas Strip revenues grew by 0.96 percent and 1.58 percent over the same time period, respectively. Compared to the first eight months of 2012, total gross

FIGURE 1: NEVADA AND CLARK COUNTY TAXABLE SALES



SOURCE: NEVADA DEPARTMENT OF TAXATION

Increased spending suggests

MORE

disposable income from higher employment.



gaming revenues in 2013 are up 0.81 percent and 2.20 percent for Nevada and the Las Vegas Strip, respectively, but down 0.04 percent for Clark County.

Real Estate and Construction

Real estate and construction are both vital to the health of Nevada's economy. Nevada is behind a majority of the country in achieving a full economic recovery, mostly the result of weakness in these sectors. From July 2012 to July 2013, housing prices in the Las Vegas metropolitan area increased by 27.32 percent, *Figure 5*. U.S. home prices rose by 12.25 percent during the same period. Although Las Vegas has recently experienced a bigger jump in prices, they remain well below their peak than the national average. Las Vegas home prices remain down 48.9 percent, while U.S. prices are 23.0 percent below their peak.

Using 12-month moving averages, housing permits for Nevada reached their peak in mid-2006, at 4,100 permits per month, *Fig-*

¹ A location quotient for a given industry in a region is calculated as $l_{i,j} = (e_{i,j}/e_j)/(e_{i,us}/e_{us})$ where $e_{i,j}$ represents employment in industry i in region j , e_j is total employment in region j , and us refers to U.S. Employment. For more information about Nevada's economic base see: <http://cber.unlv.edu/commentary/cber-25july2013.pdf>.

ure 6. After that point, the number of permits per month fell drastically due to the collapse of the housing market. The series bottomed out in mid-2011, falling by about 89 percent in the five-year period. So far this year, Nevada housing permits are up 44.66 percent. However, housing permits still remain almost 80 percent below their prerecession peak.

Without the most recent employment numbers, we must look to other indicators to determine where Nevada's economy stands. So far in 2013, we are seeing trends somewhat similar to those in 2012. Consumer spending remains strong, at both the state and local level. However, a weak national economy is affecting Nevada in the form of slowing growth in tourism. Some indicators, such as Clark County visitor volume and gaming revenue, are behind where they were at this point last year. The real estate and construction sectors are faring slightly better in 2013 than 2012 but remain far below their prerecession levels. This implies that we should see similar gains in employment, which has continually experienced about 2 percent growth year-over-year.

FIGURE 2: AUTOMOBILE AND PART SALES

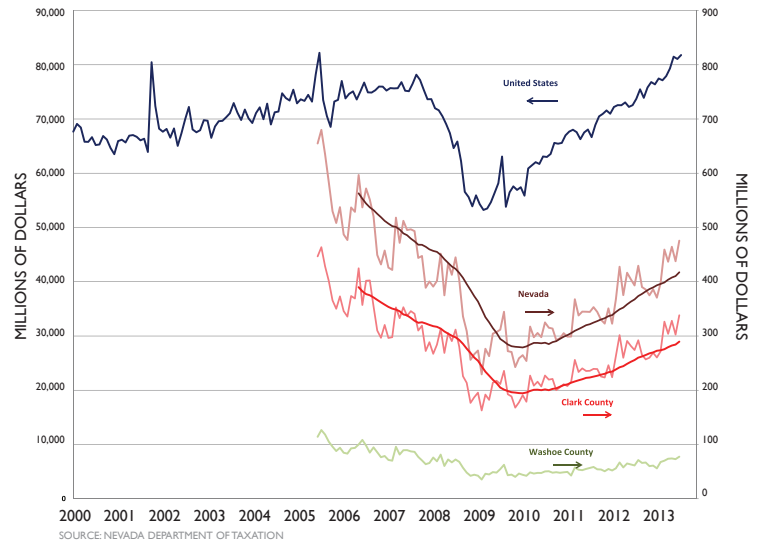


FIGURE 3: CLARK COUNTY VISITOR VOLUME

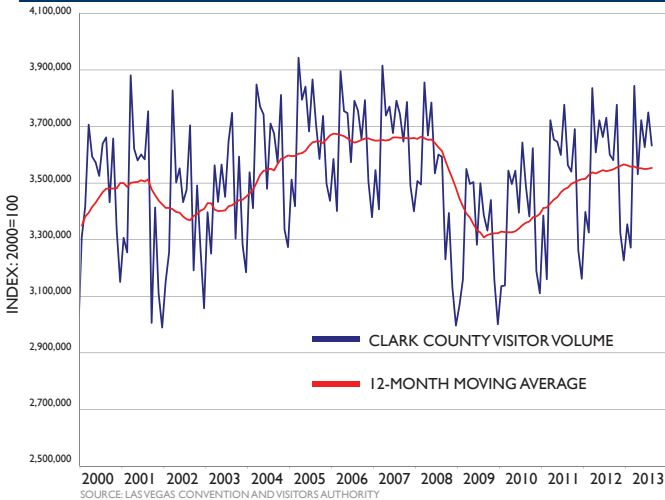


FIGURE 4: GROSS GAMING REVENUE

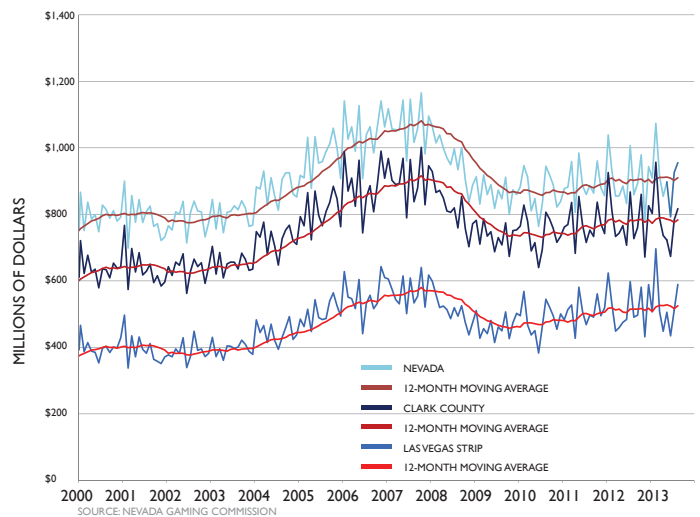


FIGURE 5: CASE-SHILLER HOME PRICE INDEXES

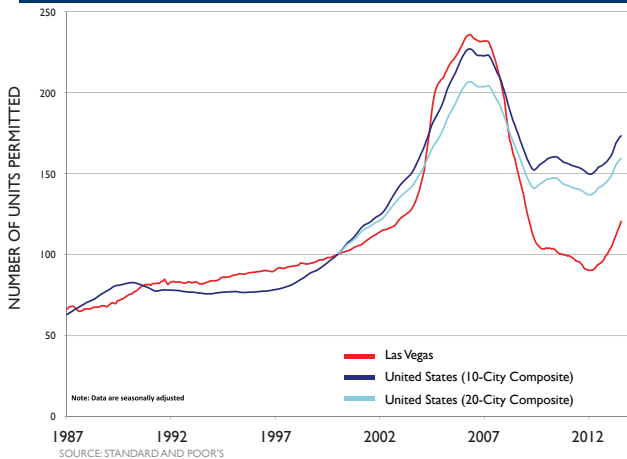


FIGURE 6: NEVADA HOUSING PERMITS





COMMERCE

REAL ESTATE SOLUTIONS • COMRE.COM

INDEPENDENTLY OWNED AND OPERATED

170 South Main Street, Suite 1600
Salt Lake City, Utah 84101

This information is provided
complements of

Michael M. Lawson
President & CEO of
Commerce Real Estate Solutions

Ed Turpin
Managing Director - Branch Manager
Las Vegas Office
3773 Howard Hughes Parkway, Suite 100S
Las Vegas, Nevada 89169
(702) 796-7900

Brian Armon, SIOR, CCIM
Managing Partner
Northern Nevada Office
6121 Lakeside Drive, Suite 160
Reno, Nevada 89511
(775) 951-9500

Commerce Real Estate Solutions has been among the top commercial real estate brokerage firms in the Intermountain and Pacific Northwest for over 30 years. Commerce Real Estate Solutions is headquartered in Salt Lake City, with offices in Provo/Orem, Ogden, Park City, and St. George, Utah, Boise, Idaho, Las Vegas and Reno, Nevada, and Seattle and Bellevue, Washington. We offer a full range of brokerage services, valuation and consulting, client representation and property/facility management. With over 260 brokers and staff members, Commerce Real Estate Solutions has the tools, resources, and experience to provide world class service to investment and corporate real estate clients on a global basis.

www.comre.com

This report has been prepared solely for information purposes. It does not purport to be a complete description of the markets or developments contained in this material. The information on which this report is based has been obtained from sources we believe to be reliable, but we have not independently verified such information and we do not guarantee that the information is accurate or complete. Published by Corporate Communications.

©2013 Commerce Real Estate Solutions. All rights reserved.